

# Your workplace or L&L will be open during Christmas and New Year



# Merry Christmas and Happy New Year



Endeavour Foundation wrote this Easy Read.

When you see the word **we** or **us** it means Endeavour Foundation.

**Bold**  
Not bold

We have put hard words in **bold**.

This means the letters are **thicker** and **darker**.

We explain what these words mean.



Your workplace or L&L will be open during the Christmas and New Year.



Your workplace or L&L will be closed on the **public holidays**.

**Public holidays** are when most people have a day off.



This means that you will be able to keep going to work and your L&L when it's not a public holiday.

## Work



You can still take some time off work if you'd like.



You will need to complete a leave form.



You can ask your Site Manager or Employment Coach for a leave form.

They can help you fill out the form.

# Learning and Lifestyle Hubs



Your L&L will be open when it's not a public holiday.



You can still do the things you like with your friends.

# Supported Independent Living (SIL)



If we support you in your home, this will not change over Christmas and New Year.



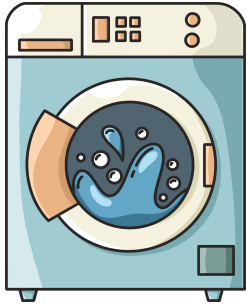
We will still be here to support you.



If you are going away, you or your support person need to let us know.



Your support person can help you to pack if you are going away,



If you are away from your Endeavour Foundation house for more than one week, you will not pay for food or laundry.

## Community Access



If we take you out into your local community, we can still help over Christmas and New Year.



Speak to your support person about what you need.



Merry Christmas and a Happy New Year from Endeavour Foundation!